



# Total Steel

total quality total service **Total Steel**



The future and independence of **Total Steel of Australia** depends on continuing to provide our customers with superior service.

[www.totalsteel.com.au](http://www.totalsteel.com.au)



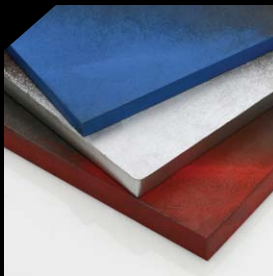
Total Steel

total quality total service **Total Steel**

## TOTAL STEEL OFFERS

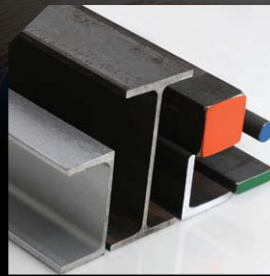
- A complete range of cost saving services.
- Fast, friendly and efficient service from our dedicated sales team.
- Obligation free quotations and expert advice from staff who understand your business.
- Plate bevelling for weld preps and bevelled cutting edges.
- Quickie cutting of plates for clients wishing to process further.
- Pressing and rolling of plate.
- Guillotine cut plate and sheet.
- Saw cutting of pipe, rhs and other sections.
- Pipe threading, cropping and punching.
- Reinforcing, walkway and galvanised wire mesh, stanchions, perforated sheets.
- Breakdown service when you need fast replacements.
- Delivery of orders when you want them - on time!

## TOTAL STEEL PRODUCTS



### Wear Plate

Everhard 400, 450, 500  
Everhard Super - EHSP,  
Hiten 780  
Stock plate or cut to size



### Sections

Flat bar, angle, round  
& square bar, channel  
and beams.  
Full range of sizes.



### Plate

Grades 250 and 350  
5mm to 200mm thick  
Stock plate or cut to size



### Pipe

Galvanised and black  
Sizes 15mm NB to 150mm NB



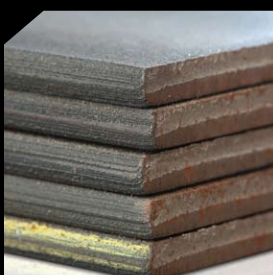
### Floor Plate

Full range of sizes  
Stock plate or cut to size



### RHS

Black, painted and galvanised  
Full range of sizes



### Sheet

Hot rolled, cold rolled  
and coated  
Full range of sizes



### Walkway Mesh - Grating

Handrail Stanchions  
Perforated sheets  
Galv wire mesh  
Black reinforcing



## Quenched and Tempered Plate Product Range

### Everhard 400

Everhard 400 is a thru hardened steel abrasion-resistant plate, free of mill scale and offers good ductility. With excellent flatness and a low CEQ, this product is easily welded using low hydrogen consumables.

### Everhard 450

Everhard 450 is a thru hardened abrasion-resistant steel plate. It offers a combination of high resistance, excellent low temperature toughness, high weldability and formability.

### Everhard 500

Everhard 500 is a thru hardened abrasion-resistant steel plate. With its high carbon and chromium content, EH500 is ideal where extreme abrasion is experienced.

### EHSP

Total Steel has worked with several major companies in testing EHSP, a highly abrasion-resistant plate. These tests proved extremely successful and dramatically demonstrated the improved life of many components manufactured from this super wear resistant plate.

### Hiten 780

Hiten 780 is a low alloyed high strength plate that offers good weldability and formability. Due to its yield strength and low carbon, it can offer significant reduction in the weight of welded structures.

For more technical information please refer to our website.

## TOTAL STEEL SERVICES



### Oxy Cutting

- Six head multi torch oxy fuel cutting machines.
- Oxy propane cutting process is achieved by blowing away the molten material which is melted by combustion heat of acetylene gas and oxygen.
- With a capacity of cutting mild steel plate up to 300mm thick; quenched and tempered plate up to 160mm thick.
- We have the ability to produce almost any shape from large plates that makes oxy cutting ideal for a wide range of industries.



### Plasma Cutting

- Powerful and reliable high definition plasma units
- Fully rotational 360 degree bevel head cutting systems perfect for all your preps welds, chamfers, general engineering and fabrication purposes cutting up to 50mm thick material.
- Full CNC controlled machine with greater tolerance allowing highly accurate shapes to be produced & better cut quality.



### Saw Cutting

- Total Steel can save you time and money by delivering your pipe, merchant sections or RHS products cut to size.
- By feeding in bulk material we can ensure that your products are cut accurately and meet your specifications with either perfectly square ends or 45 degree mitre ends.



### Drilling and Countersinking

- Drilling wear plates requires replaceable carbide tipped inserts using robust drilling equipment to avoid tip chipping caused by excess movement.
- However the drilling of EHSP wear plates requires the use of tungsten.
- All other grades can be drilled with high speed drills provided care is taken.

### Stud Welding

- Stud welding to wear plate enables rapid fitting of wear plate liners to chutes, feed slots and hoppers.

**Please contact your local branch to discuss your specific requirements.**



# Total Steel

total quality total service **Total Steel**

Total Steel was established in 1976 when it opened its first branch in New South Wales. Progressively we have expanded and now have five purpose built distribution warehouses and steel processing specialist to the mining, construction, engineering & general fabrication industries around Australia with our most recent new facility in Darwin.

The geographic coverage of our branches enables us to focus on the requirements of each region in terms of supply and demand plus guarantee on time delivery throughout Australia. Over the years we have developed a solid understanding of our customers' requirements in these areas. We have always recruited personnel with sound knowledge in the field and experienced operators to achieve optimum results.

Total Steel warehouses an extensive range of products comprising of quenched and tempered plate, mild steel plate, sheet and coil as well as a full range of RHS, black and galvanised pipe and merchant sections including flats, rounds, square and channel.

Offering the latest in plate cutting technology, Total Steel has the capabilities of plasma cutting including bevel cutting, multi torch oxy cutting, drilling, countersinking, stud welding and saw cutting. Together with our customer and supplier network we can also assist you with other requirements including line pipe, hollow bar, grating, stanchions, mesh and bending, rolling, punching, pipe-threading and laser cutting.

Our expertise in steel and professional relationship with our customers gives us the flexibility to meet urgent requirements or breakdowns. The long term relationship with our customers enables us to understand their needs delivering on our promise which differentiates Total Steel from our competitors.

## How to contact us

Office open from 7am - 6pm, Monday to Friday.

For prompt service & or quotations please contact one of our sales staff on details listed below.

[www.totalsteel.com.au](http://www.totalsteel.com.au)



## Brisbane Branch

106 Mica Street  
Carole Park Queensland 4300  
P: +61 7 3723 9200  
F: +61 7 3271 1699  
E: [brisbane@totalsteel.com.au](mailto:brisbane@totalsteel.com.au)



## Sydney Branch

46 Anzac Ave  
Smeaton Grange NSW 2567  
P: +61 2 4648 8111  
F: +61 2 4647 8011  
E: [sydney@totalsteel.com.au](mailto:sydney@totalsteel.com.au)



## Perth Branch

53-75 McDowell Street  
Welshpool WA 6106  
P: +61 8 9351 6800  
F: +61 8 9351 6868  
E: [perth@totalsteel.com.au](mailto:perth@totalsteel.com.au)



## Melbourne Branch

207-211 Fitzgerald Road  
Laverton North Vic 3026  
P: +61 3 9369 8855  
F: +61 3 9369 8866  
E: [melbourne@totalsteel.com.au](mailto:melbourne@totalsteel.com.au)



## Darwin Branch

48 Dawson Street  
East Arm NT 0828  
P: +61 8 8984 4324  
F: +61 8 8947 4615  
E: [darwin@totalsteel.com.au](mailto:darwin@totalsteel.com.au)